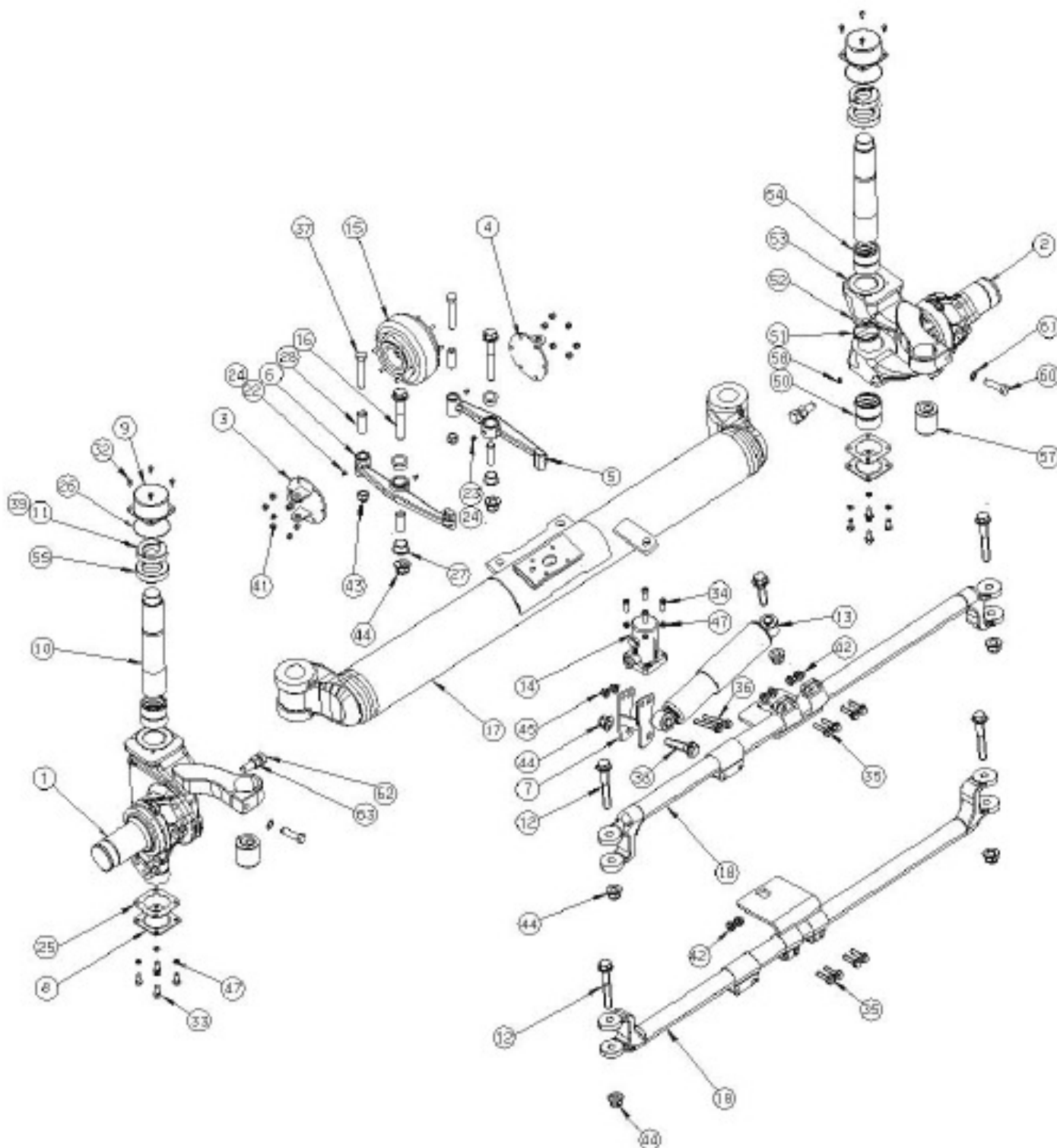


Mercedes-Benz TrailerAxleSystems **Appendix 11.1 Steering Axle DLS**

Which components were replaced or repaired?



Mercedes-Benz TrailerAxleSystems Appendix 11.2 Steering Axle DLS

Which components were replaced or repaired?

No.	Designation	Number
1	Steering knuckle, left	
2	Steering knuckle, right	
3	Plate	
4	Plate	
7	Bracket for damper	
8	Bottom cover	
9	Top cover	
10	Kingpin	
11	Clamp nut	
13	Damper	
14	Locking cylinder	
15	Opposing bellows	
17	Axle tube	
18	Tie rod	
22	Lubricating nipple	
23	Lubricating nipple	
32	Bolt M8x15	
33	Bolt M10x25	
34	Bolt M10x30	
35	Bolt M12x65	
36	Bolt M12x90	
38	Bolt M20x100	
39	Bolt M10x45	
41	Nut M8	
42	Nut M12	
45	Flanged nut M12	
47	Washer M10	
58	Lubricating nipple	
60	Clamp screw	
61	Tooth lock washer	
62	Steering stop bolt	
63	Nut	
S	Adjusting lever rep. set (nos. 5; 6; 16; 24; 27; 28; 37; 43; 44)	
B	Track rod adjustment rep. set (nos. 12; 44; 57)	
C	Steering knuckle bearing rep. set (nos. 25; 26; 50; 51; 52; 53; 54; 55)	